



Stone Lake Retail Park, part of the [Greenwich/Charlton Regional Cluster](#)  
Serving over 1.04 million people within 20 minute drive time

# Stone Lake Retail Park

Greenwich, Charlton SE7 8LU





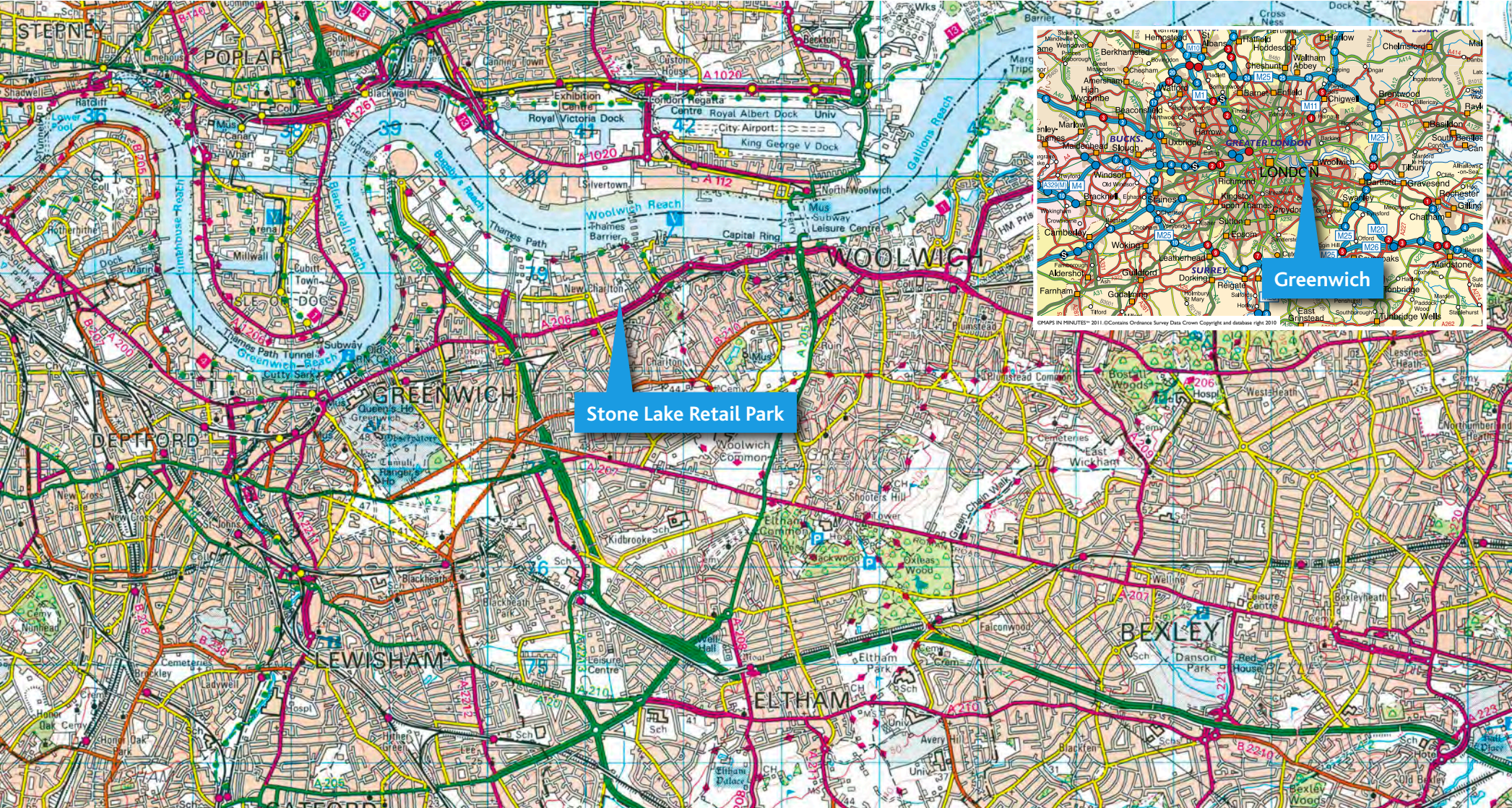
# Stone Lake Retail Park Greenwich

Critical mass:  
92,059 sq ft

Planning consent:  
Open A1 Non Food Retail

Existing occupiers:  
Currys, Harveys, Halfords, B&M,  
Carpetright, Dreams

Car parking:  
423 spaces





# Stone Lake Retail Park Greenwich

Critical mass:  
92,059 sq ft

Planning consent:  
Open A1 Non Food Retail

Existing occupiers:  
Currys, Harveys, Halfords, B&M,  
Carpetright, Dreams

Car parking:  
423 spaces



New M&S and  
Sainsbury's stores



# Stone Lake Retail Park Greenwich

Critical mass:  
92,059 sq ft

Planning consent:  
Open A1 Non Food Retail

Existing occupiers:  
Currys, Harveys, Halfords, B&M,  
Carpetright, Dreams

Car parking:  
423 spaces



<b>U/O</b>	11,840 sq ft	(1,099 sq m)	Unit A1
<b>Dreams</b>	8,013 sq ft	(744 sq m)	Unit A2
<b>carpetright.</b>	10,675 sq ft	(992 sq m)	Unit B
<b>Harveys</b>	10,675 sq ft	(992 sq m)	Unit C
<b>halfords</b>	10,709 sq ft	(995 sq m)	Unit D
<b>b.m</b>	20,000 sq ft	(1,858 sq m)	Unit E
<b>Currys</b>	20,000 sq ft	(1,858 sq m)	Unit F



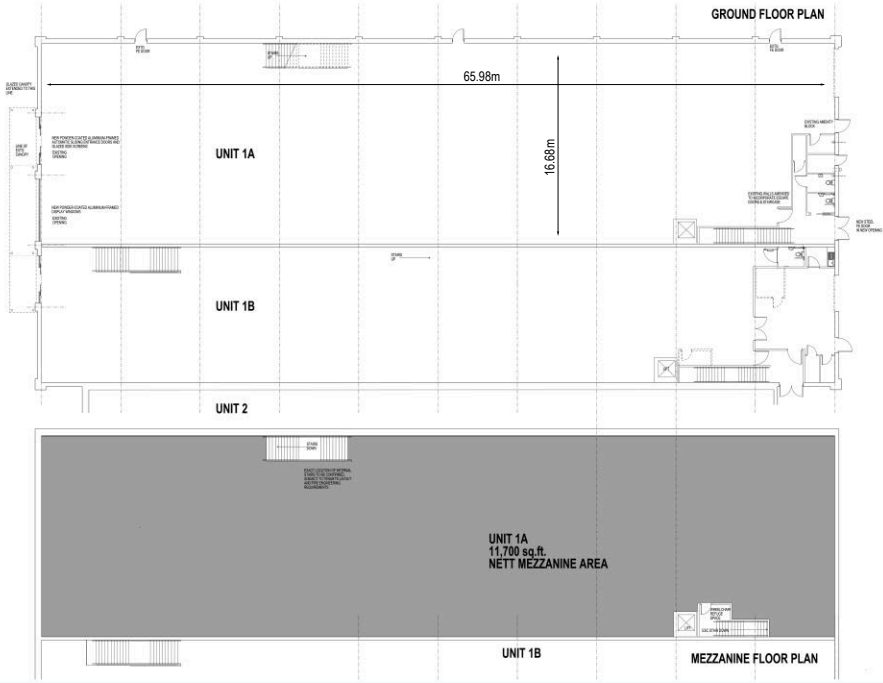
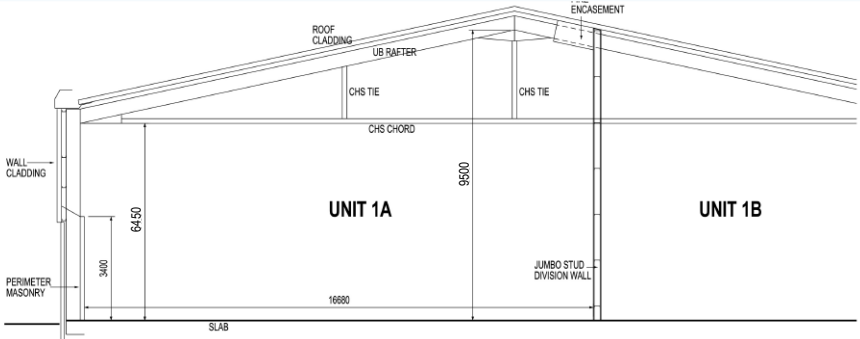
# Stone Lake Retail Park Greenwich

Critical mass:  
92,059 sq ft

Planning consent:  
Open A1 Non Food Retail

Existing occupiers:  
Currys, Harveys, Halfords, B&M,  
Carpentry, Dreams

Car parking:  
423 spaces



## Residential Catchment Population

5 minute	41,089
10 minute	170,296
20 minute	1,041,989

## Retail Warehouse Cluster Comparison Goods Expenditure

Charlton	£142.9m
Croydon (Purley Way Central)	£191.1m
Thurrock	£116.2m
Orpington	£129.7m

Source : CACI Retail Footprint 2015



# Stone Lake Retail Park Greenwich



## Key Details

- 92,059 sq ft of Open A1 non food retail consent
- 423 car parking spaces

## Opportunity

- 11,840 sq ft unit available to let
- 300 sq m of ancillary food consent
- Full cover mezzanine consent
- Scheme is located nearby to the recently developed 140,000 sq ft Sainsbury's and 80,000 sq ft M&S.

## Contact:

For further information



**CUSHMAN &  
WAKEFIELD**

## Martin Supple

020 7152 5898  
martin.supple@cushwake.com



## Chris Linnell

020 3058 0203  
chris@mcmullenwilson.com

Aberdeen Property Investors and their clients and any joint agents give notice that:

1. They are not authorised to make or give any representations or warranties in relation to the property either here or elsewhere, either on their own behalf or on behalf of their client or otherwise. They assume no responsibility for any statement that may be made in these particulars. These particulars do not form part of any offer or contract and must not be relied upon as statements or representations of fact.
2. Any areas, measurements or distances are approximate. The text, photographs and plans are for guidance only and are not necessarily comprehensive. It should not be assumed that the property has all necessary planning, building regulation or other consents and Aberdeen Property Investors have not tested any services, equipment or facilities. Purchasers must satisfy themselves by inspection or otherwise.